



SIMPLIFIED GROUND DRIVE.

The simplified, continuously variable-speed hydrostatic ground drive makes operation simple and efficient. Excellent power and ground speed for maximum production. Optimal axle ratios provide powerful pulling performance and improved reliability.



MACHINE FUNCTIONALITY.

Strong multi-functioning hydraulics improve productivity allowing operators to steer and operate other functions simultaneously. Independent front and rear differential locks improve traction when needed allowing superb operation in wet conditions.



BEST-IN-CLASS VISIBILITY.

The large front glass and sloped narrow hood provide excellent front visibility to the blade and allow increased visibility to the front of the machine. The unobstructed rear glass gives clear site to the grapple for efficient grapple handling and easy maneuverability for placing a loader.



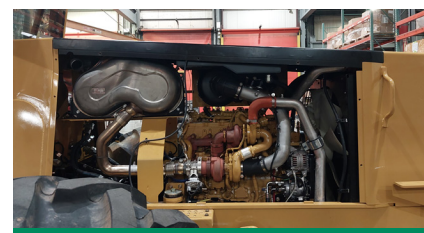
SPACIOUS OPERATOR'S CAB.

The large, spacious cab provides the ultimate in operator comfort and features simple and easy-to-use controls. Weiler programming allows joystick button mapping for multiple control patterns. Joystick steering with front foot controls is standard with an optional mechanical rotating seat with rear foot controls.



OPERATOR ACCESS.

Wide steps on both sides of the machine and 90 degree door openings make it easy for operators to enter and exit the cab. The DEF tank and cab tilt pump are located in the LH saddle bag for ground level access. The RH saddle bag houses the batteries and the hydraulic fill pump for additional ground level accessibility.



SIMPLE, CLEAN DESIGN.

Fifty percent less hoses across the center section and a front mounted cooling system with a variable-speed reversing fan deliver improved reliability with low operating costs. Easy engine and chassis access for best-in-class serviceability. Dual tapered roller bearing hitch pins, thicker panels, and solid steps deliver improved structural life.

S340 SPECIFICATIONS

ENGINE MODEL	Cat® C7.1 Stage 5	WHEELBASE	160" 4064 mm	GROUND CLEARANCE	26.0" 660 mm
GROSS POWER	265 hp 198 kW	WEIGHT	45,000 lb 20 412 kg	BOX GRAPPLE TONG CAPACITY	17 ft² 1.6 m²
ENGINE SPEED	2200 rpm	TRANSPORT WIDTH	11' 7" 3.53 m	BOX GRAPPLE TONG OPENING	127" 3226 mm
FUEL CAPACITY	100 gal 378 L	TRANSPORT HEIGHT	11' 4" 3.45 m	BLADE GRAPPLE TONG CAPACITY	18 ft² 1.67 m²
DEF CAPACITY	5.0 gal 19 L	TRANSPORT LENGTH	28' 0" 8.53 m	BLADE GRAPPLE TONG OPENING	145.0" 3683 mm

Base configuration includes 35.5L-32 26PR 2xRing Tires, Fenders, Winch, Water Tank, Box Grapple, and Blade. For weight subtract 545 lb (247 kg) 30.5L-32 2x Ring tires, 1,508 lb (684 kg) for 30.5L-32 tires. For height and ground clearance subtract 2.4" (61 mm) for 30.5L-32 tires.

POWERTRAIN

- Cat C7.1 dual turbo engine certified to EPA Stage 5
- Primary and secondary fuel filters, including water separator
- Electric fuel priming and transfer pump
- Integrated engine pre-cleaner with 2-stage filter
- Front mounted cooling package
- Variable-speed, hydraulic driven reversing fan
- Variable-speed hydrostatic ground drive
- HD axles, approved for dual tires up to 35.5L-32 with 24.5L-32 outer tires and single wide tires up to 73x44 with chains
- Independent front and rear differential locks
- Lubed for life universal joints and HD drive shafts
- Enclosed disc service brakes on front axle
- Enclosed parking brake - spring applied, hydraulically released

OPERATOR ENVIRONMENT

- Wide, enclosed cab
- Joystick steering with front foot controls
- High-capacity HVAC system
- Air suspension seat with 4-point harness seat belt
- AM/FM/Bluetooth Radio
- 24V to 12V converter, 12V power port, and 2x USB ports
- 4 LED cab lights
- Weiler machine software

HYDRAULICS

- Load-sense hydraulics
- Variable displacement pumps
- High performance, multi-functioning main control valve
- Spin-on filters

ELECTRICAL

- 115 ampere alternator
- 24-volt electrical system with 2x 12-volt batteries
- Main disconnect switch with Diesel Exhaust Fluid (DEF) purge indicator light
- Product Link™ Ready

SALES AND SERVICE

Sold and serviced exclusively through Weiler Forestry dealers worldwide.

OTHER STANDARD EQUIPMENT

- Heavy-duty frames
- Narrow engine enclosure with high front visibility
- Single side engine service
- Dual tapered roller bearing upper and lower center hitch
- Heavy-duty limb risers
- Wide water tank ready decking blade with welded on cutting edge
- Tilt cab
- Electric hydraulic oil fill pump

OPTIONAL EQUIPMENT

- Dual Function Arch/Boom and Grapple Head
- Cable Arch w/ High Speed Winch and Extreme Duty Fenders
- 17 ft² & 19 ft² HD Box Tong or 18 ft² Blade Tong Grapples
- No Winch, Winch Ready, Standard Winch, or High-Speed Winch
- Grapple Fenders
- Weighted Decking Blade
- Standard or Weighted Decking Blade w/ Bolt-on Cutting Edges
- Front Axle w/ Limited Slip Differential
- Wheel Steering
- High Rotation Joystick Seat w/ Added Rear Foot Controls
- High Intensity Cab Mounted Light Bars
- High Intensity Cab Mounted Light Bars w/ Additional 3 Boom Lights
- Pressurized Blade Mounted Water Tank
- CB Radio
- Engine Driven Cooling Fan
- Product Link™ (PL243 Cellular or PL631 Satellite)
- Ether Starting Aid
- 7/8" x 75' Winch Cable w/ 7 Ton Hook
- 5 LB Fire Extinguisher
- Water Tank Fill w/ RV Antifreeze
- 30.5L-32 NOAW Tires - 126.6" (3220 mm)
- 30.5L-32 Tires - 133.3" (3390 mm), Approved for Chains
- 30.5L-32 2x Ring Tires - 126.6" (3220 mm)
- 35.5L-32 NOAW Tires - 139.1" (3530 mm)
- 35.5L-32 2x Ring Tires - 139.1" (3530 mm)
- 35.5L-32 Tires - 145.8" (3700 mm), Approved for Chains
- 73x44-32 Tires - 158" (4000 mm)
- 30.5 or 35.5 Tubes (Set of 4)

WARRANTY

12 months standard. Extended warranty available.

